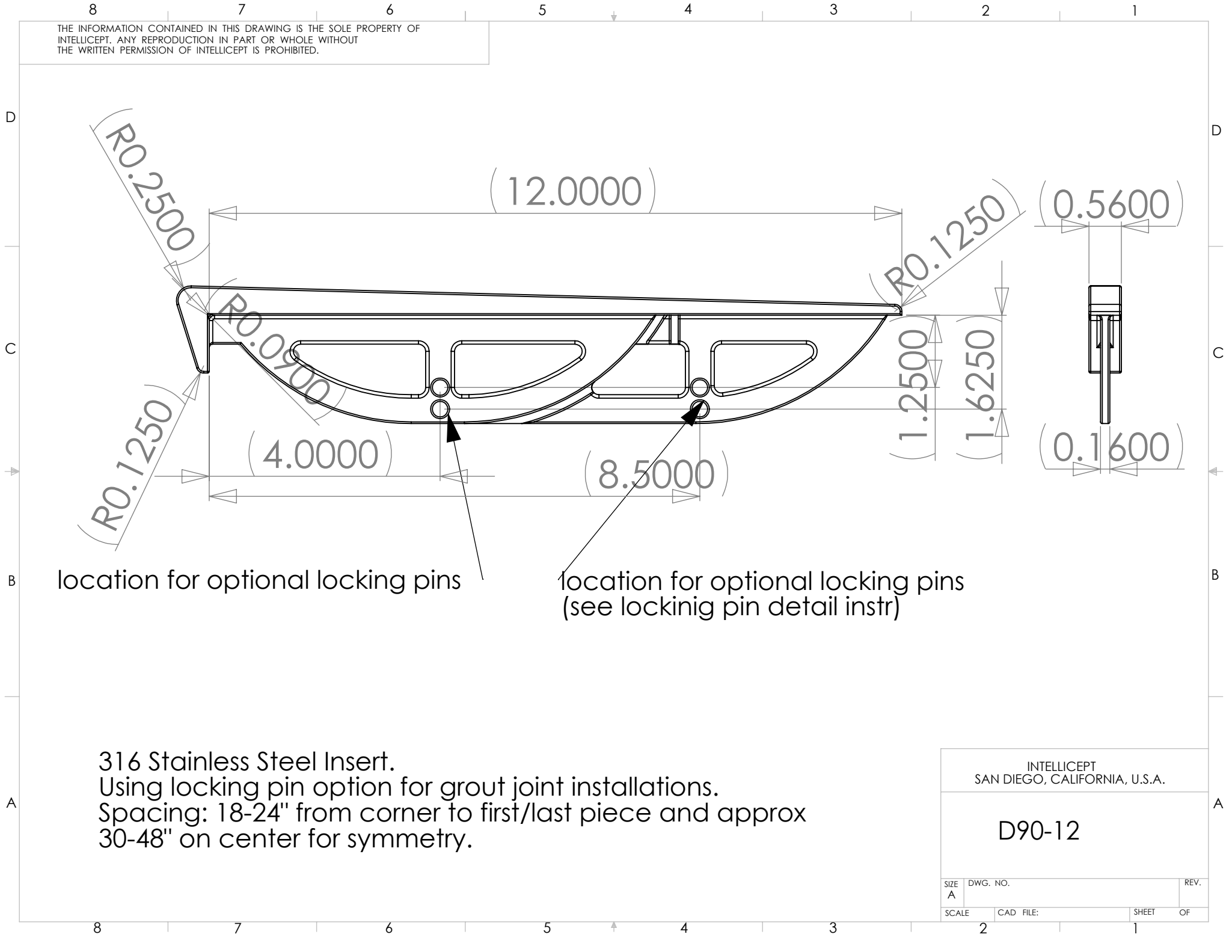


THE INFORMATION CONTAINED IN THIS DRAWING IS THE SOLE PROPERTY OF INTELLECT. ANY REPRODUCTION IN PART OR WHOLE WITHOUT THE WRITTEN PERMISSION OF INTELLECT IS PROHIBITED.



location for optional locking pins

location for optional locking pins  
(see locking pin detail instr)

316 Stainless Steel Insert.  
 Using locking pin option for grout joint installations.  
 Spacing: 18-24" from corner to first/last piece and approx  
 30-48" on center for symmetry.

INTELLECT SAN DIEGO, CALIFORNIA, U.S.A.			
D90-12			
SIZE A	DWG. NO.	REV.	
SCALE	CAD FILE:	SHEET	OF
		2	1