

PRODUCT DETAILS

FA 90A

(FA Series - Surface Mount Aluminum)

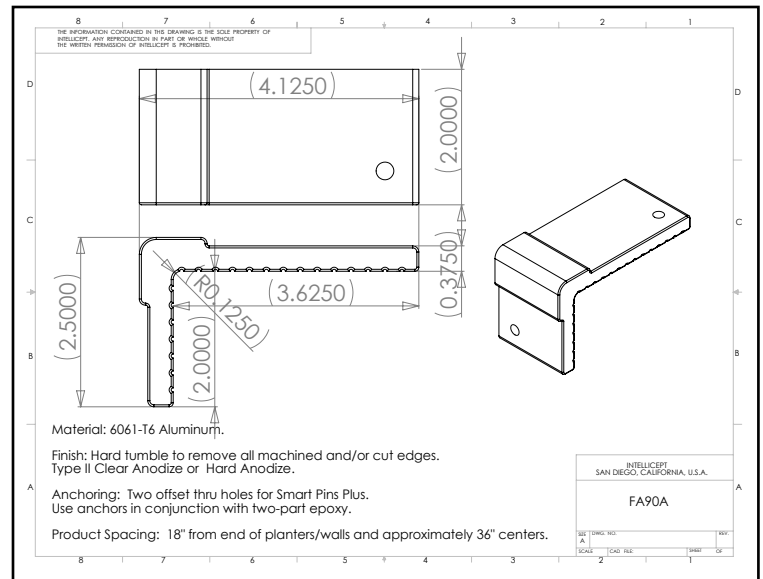


Description: This patented part is designed for 90 degree walls with 1/8" radius edge. Model FA90A is most commonly used on granite, marble, stone, block, brick, or other surfaces with a hard corner and no vertical clearance restrictions. This part uses two SMART PINS PLUS anchors.

This product is not intended for use on steps, stairs, sidewalk curb, or any pedestrian trafficked surfaces.



(shown in Clear Anodize)



Material: 6061-T6 Aluminum

Finish: Hard tumbled to remove all machined and/or cut edges. Aluminum finish options include Type II Clear Anodize or Hard Anodize.

Corner Radius: For square corner from 1/8" - 3/8" radius.

Outside Dimensions: 2" (wide) x 4-1/8" (deep) x 2-1/2" (tall)

Anchoring: Anchored with two offset thru holes for SMART PINS PLUS anchors. Use anchors in conjunction with two-part epoxy.

Product Spacing: 18" from end of planters/walls and approximately 36" centers. Do not apply at grout joints.