

# PRODUCT DETAILS

## HR Series

(Hand Rail Series)



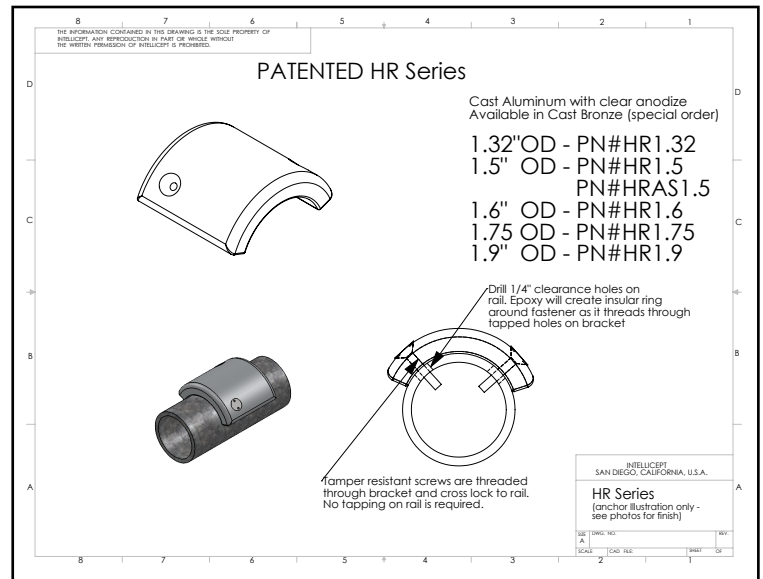
1547 N. Cuyamaca, El Cajon, CA 92020  
Tel 619-447-6374 Fax 619-447-6396

[www.skatestoppers.com](http://www.skatestoppers.com)

**Description:** The patented cast parts are designed for round, tubular handrails. The part is attached with two stainless steel tamper resistant screws and two-part epoxy.



(shown in Cast Aluminum)



**Material:** Cast Aluminum with Clear Anododize coating (will accept paint).

**Outside Rail Diameter:** Available for 1.5, 1.6, 1.75 and 1.9 outside diameter.

**Outside Dimensions:** Approx. 2" long.

**Anchoring:** Anchored with two stainless steel tamper resistant screws in conjunction with two-part epoxy.

**Product Spacing:** Spacing is generally symmetric to vertical post at approximately 30" (+6") centers.