

PRODUCT DETAILS

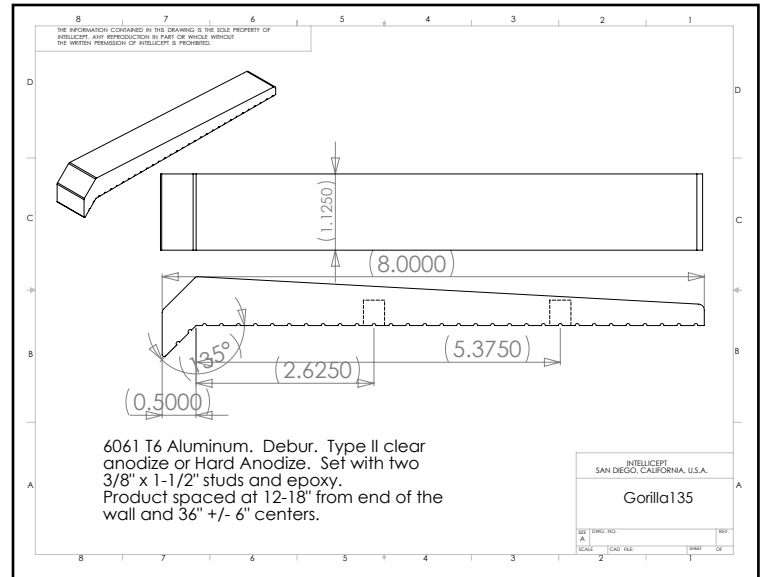
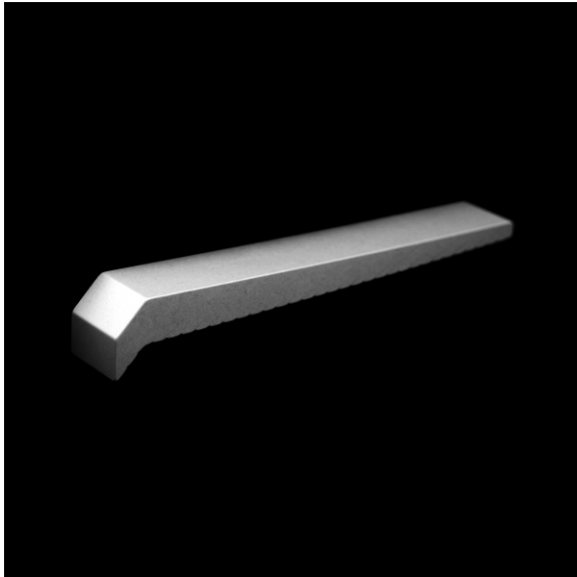
Gorilla 135

(Gorilla Line- Surface Mount Aluminum)



Description: This extruded aluminum part is designed for walls with 1/2" or greater chamfer corner. Gorilla 135 is most commonly used on poured concrete, but it may be used on granite, marble or pre-cast concrete. This part uses two concealed G PIN anchors.

This product is not intended for use on steps, stairs, sidewalk curb, or any pedestrian trafficked surfaces.



Material: 6061-T6 Aluminum

Finish: Hard tumbled to remove all machined and/or cut edges. Aluminum finish includes Type II Clear Anodize or Hard Anodize.

Corner Radius: For 1/2" or greater chamfer corner.

Outside Dimensions: 1 1/8" (wide) x 8" (deep) x 1-1/8" (tall)

Anchoring: Anchored with two concealed G PIN anchors. Use anchors in conjunction with two-part epoxy.

Product Spacing: 12"-18" from end of planters/walls and approximately 36" centers. Do not apply at grout joints.