

PRODUCT DETAILS

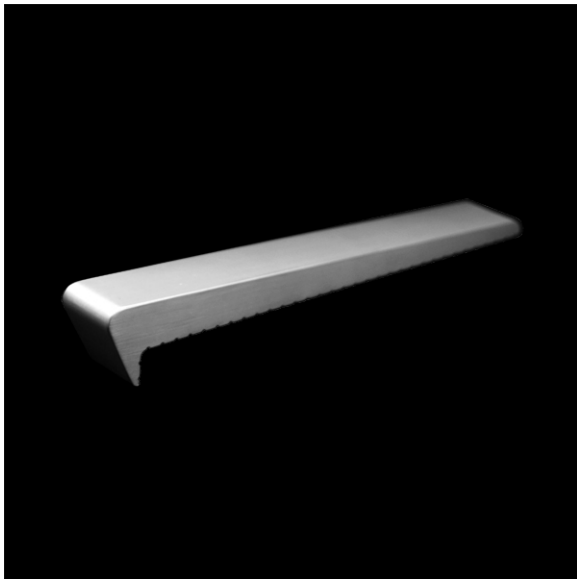
Gorilla 012

(Gorilla Line- Surface Mount Aluminum)

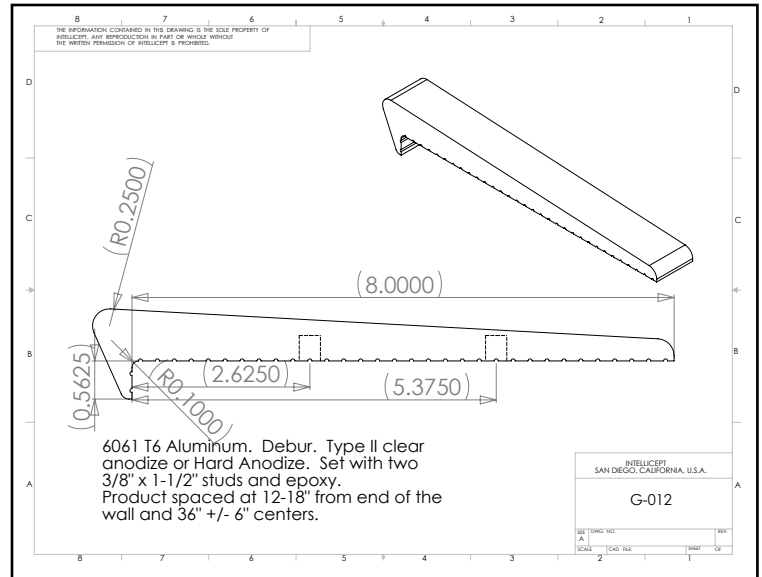


Description: This extruded aluminum part is designed for walls from 0" - 3/8" radius edge. Gorilla 012 is most commonly used on granite, marble, stone, block, brick, or other surfaces with a hard corner. This part uses two concealed G PIN anchors.

This product is not intended for use on steps, stairs, sidewalk curb, or any pedestrian trafficked surfaces.



(shown in Clear Anodize)



Material: 6061-T6 Aluminum

Finish: Hard tumbled to remove all machined and/or cut edges. Aluminum finish includes Type II Clear Anodize or Hard Anodize.

Corner Radius: For square corner from 0" - 3/8" radius.

Outside Dimensions: 1-1/8" (wide) x 8" (deep) x 1-1/8" (tall)

Anchoring: Anchored with two concealed G PIN anchors. Use anchors in conjunction with two-part epoxy.

Product Spacing: 12"-18" from end of planters/walls and approximately 36" centers. Do not apply at grout joints.