

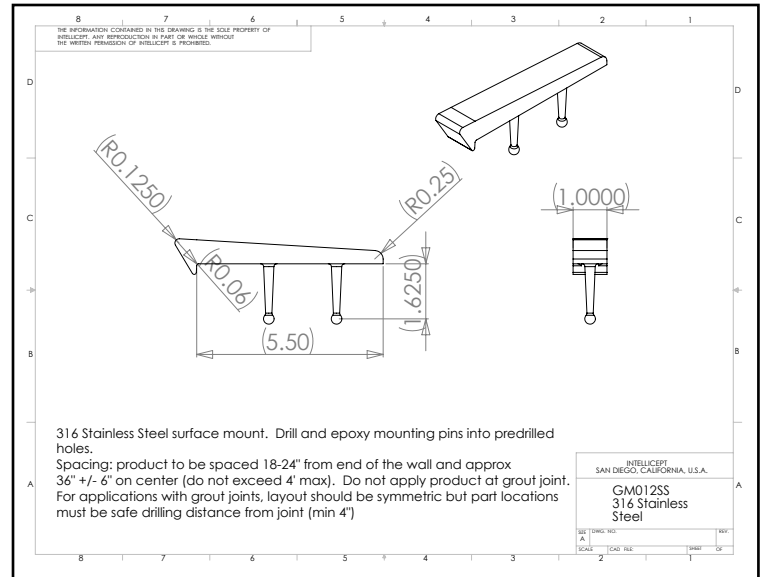
# PRODUCT DETAILS

## GM012SS

("G-mini" Series - Surface Mount Stainless) Steel

**Description:** This Stainless Steel part is designed for curbs with 0"-3/8" radius edge. GM012SS is most commonly used on granite, marble, stone, block, brick or other surfaces on a hard corner to complement larger G-series parts. This part uses two concealed G-mini anchors.

**This product is not intended for use on steps, stairs, sidewalk curb, or any pedestrian trafficked surfaces.**



**Material:** 316 Stainless Steel

**Standard Finish:** Brushed

**Corner Radius:** For square corner from 0"-3/8" radius.

**Outside Dimensions:** 1" (wide) x 5.5" (deep)

**Anchoring:** Anchored with two blind G-mini anchor pins. Use anchors in conjunction with two-part epoxy.

**Product Spacing:** 18"-24" from end of curbs and approximately 36" centers (not to exceed 48"). Do not apply product at grout joint. For applications with grout joints, layout should be symmetric but part locations must be safe drilling distance from joint (min 4").

**SKATE STOPPERS**  
1547 N. Cuyamaca, El Cajon, CA 92020  
Tel 619-447-6374 Fax 619-447-6396  
[www.skatestoppers.com](http://www.skatestoppers.com)