

PRODUCT DETAILS

FR 0.25PC

(FR Series - Surface Mount Aluminum)



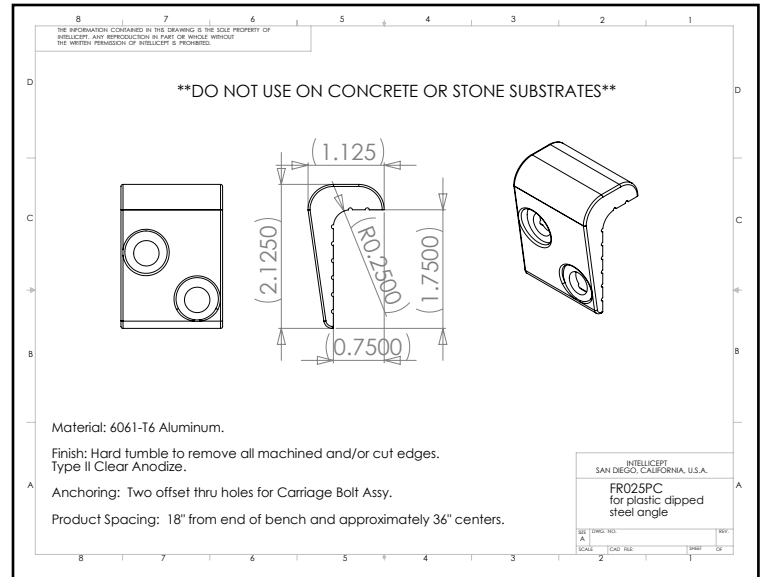
1547 N. Cuyamaca, El Cajon, CA 92020
Tel 619-447-6374 Fax 619-447-6396

www.skatestoppers.com

Description: This part is designed to fit plastic coated/expanded metal benches with a 1/4" radius edge. May be used some model fiberglass benches.

NOTE: NOT RECOMMENDED FOR WOOD OR PLASTIC BENCHES

This product is not intended for use on steps, stairs, sidewalk curb, or any pedestrian trafficked surfaces.



Material: 6061-T6 Aluminum

Finish: Hard tumbled to remove all machined and/or cut edges. Aluminum finish options include Type II Clear Anodize.

Corner Radius: For corner with 1/4" radius.

Outside Dimensions: 1-1/2" (wide) x 1-1/8" (deep) x 2-1/8" (tall)

Anchoring: Two offset thru holes for Carriage Bolt Assy

Product Spacing : 18" from end of bench and approximately 36" centers.