

# PRODUCT DETAILS

## FR 0.12

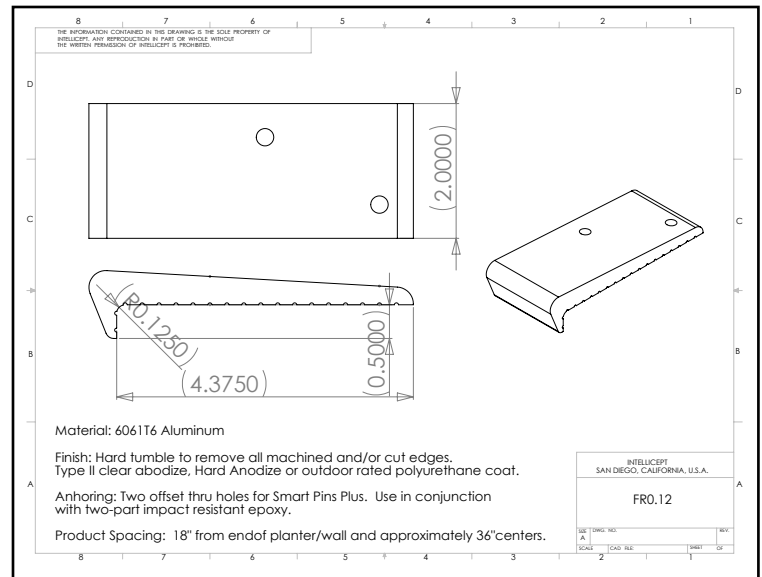
(FR Series - Surface Mount Aluminum)

**Description:** This part is designed for walls with 1/8" radius edge (may be used in place of model FA 90). FR0.12 is most commonly used on granite, marble, stone, block, brick, or other surfaces with a hard corner. This part uses two SMART PINS PLUS anchors.

**This product is not intended for use on steps, stairs, sidewalk curb, or any pedestrian trafficked surfaces.**



(shown in Clear Anodize)



**Material:** 6061-T6 Aluminum

**Finish:** Hard tumble to remove all machined and/or cut edges. Aluminum finish options include Type II Clear Anodize or Hard Anodize.

**Corner Radius:** For square corner from 1/8" - 3/8" radius.

**Outside Dimensions:** 2" (wide) x 4-3/4" (deep) x 1" (tall)

**Anchoring:** Anchored with two offset thru holes for SMART PINS PLUS anchors. Use anchors in conjunction with two-part epoxy.

**Product Spacing :** 18" from end of planters/walls and approximately 36" centers. Do not apply at grout joints.

**SKATE STOPPERS**  
1547 N. Cuyamaca, El Cajon, CA 92020  
Tel 619-447-6374 Fax 619-447-6396  
[www.skatestoppers.com](http://www.skatestoppers.com)