

# PRODUCT DETAILS

## FA 902.5

(FA Series - Surface Mount Aluminum)



1547 N. Cuyamaca, El Cajon, CA 92020  
Tel 619-447-6374 Fax 619-447-6396

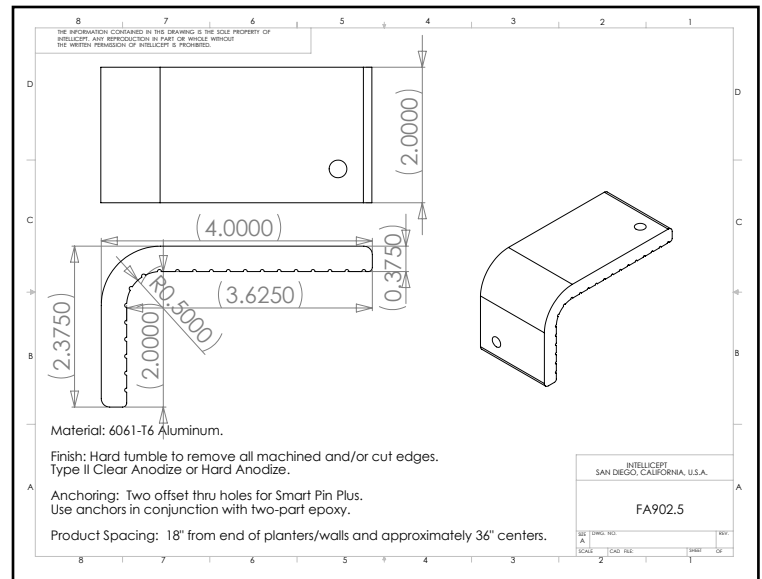
[www.skatestoppers.com](http://www.skatestoppers.com)

**Description:** This patented part is designed for 90 degree walls, planters, or benches with 1/2" radius edge. FA902.5 is most commonly used on poured concrete.

This product is not intended for use on steps, stairs, sidewalk curb, or any pedestrian trafficked surfaces.



(shown in Clear Anodize)



**Material:** 6061-T6 Aluminum

**Finish:** Hard tumbled to remove all machined and/or cut edges. Aluminum finish options include Type II Clear Anodize or Hard Anodize.

**Corner Radius:** For corner with 1/2" radius.

**Outside Dimensions:** 2" (wide) x 4" (deep) x 2-3/8" (tall)

**Anchoring:** Anchored with two offset thru holes for SMART PINS PLUS anchors. Use anchors in conjunction with two-part epoxy.

**Product Spacing:** 18" from end of planters/walls and approximately 36" centers. Do not apply at grout joints.