

# PRODUCT DETAILS

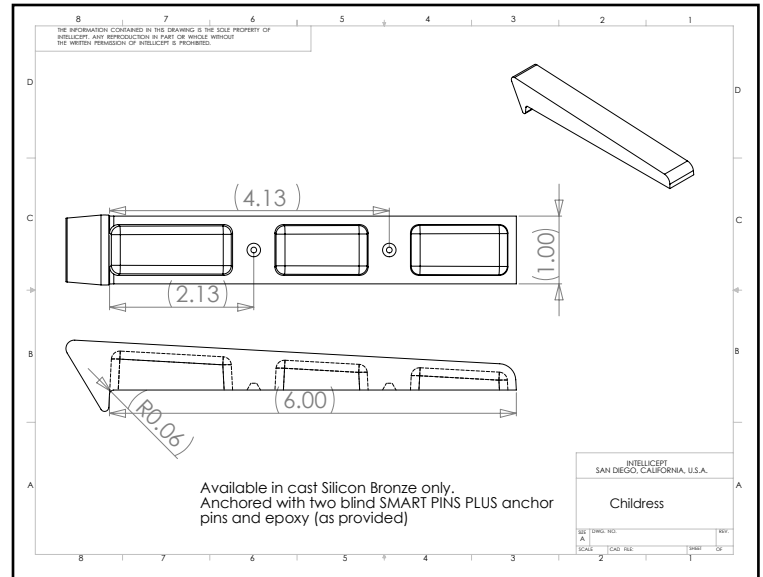
## Childress

(Laser Series - Surface Mount)



**Description:** This cast part is designed for walls from 0" - 3/8" radius edge. Childress is most commonly used on granite, marble, stone, block, brick, or other surfaces with a hard corner. This part uses two concealed SMART PINS PLUS anchors.

This product is not intended for use on steps, stairs, sidewalk curb, or any pedestrian trafficked surfaces.



**Material:** Bronze

**Bronze finish:** Brown Patina with Satin Coat

**Corner Radius:** For square corner from 1/8" - 3/8" radius.

**Outside Dimensions:** 1" (wide) x 6" (deep) x 1" (tall)

**Anchoring:** Anchored with two blind SMART PINS PLUS anchors. Use anchors in conjunction with two-part epoxy.

**Product Spacing:** 18" from end of planters/walls and approximately 36" centers. Do not apply at grout joints.